



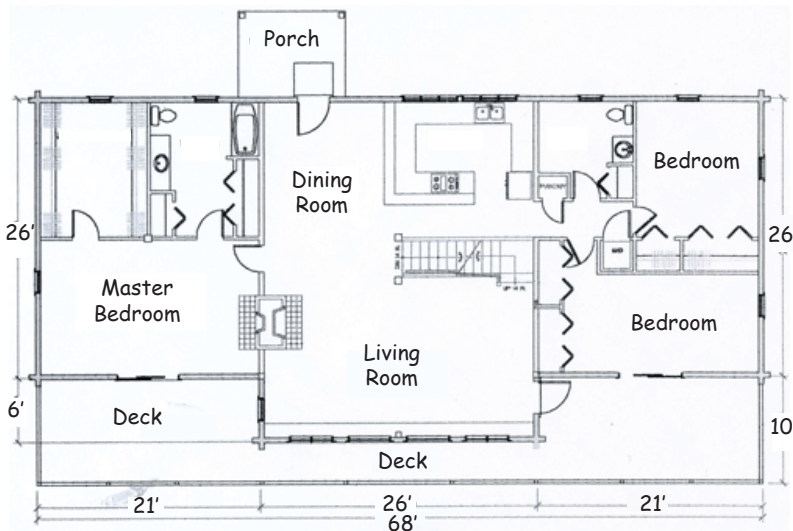
# Featured Model

## Arch Hill

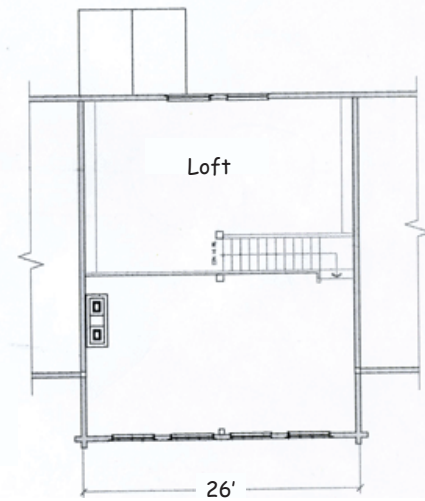
Total Square Footage  
Ranges from 1,824 to 2,800



Option	A	B	C
<b>Total Sq. Ft.</b>	<b>1,832</b>	<b>2,340</b>	<b>2,800</b>
First Floor	1,524	1,924	2,296
Second Floor	308	416	504
Decks	476	604	672
Porches	80	80	80



First Floor Plan



Second Floor Plan

### Option Sizes Below, Custom Sizes Available

Option A: Main: 22'x30', Wings 24'x18', Decks 2-8'x18', 1-8'x10', 1-4'x22' Porch: 1-8'x10'

Option B: Main: 26'x32', Wings 26'x21', Decks 2-10'x21', 1-4'x26', 1-8'x10' Porch: 8'x10'

Option C: Main: 28'x34', Wings 28'x24', Decks 2-10'x24', 1-4'x28', 1-8'x10' Porch: 8'x10'

37 Old Route 12 N, Westmoreland NH 03467 • 603-363-4606 or 603-759-9679 • [www.log-homes-nh.com](http://www.log-homes-nh.com)

Fax: 866-886-9538 E-Mail: [sgiza@crocketthomes.net](mailto:sgiza@crocketthomes.net)